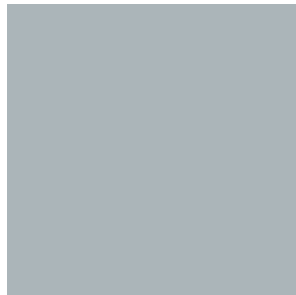
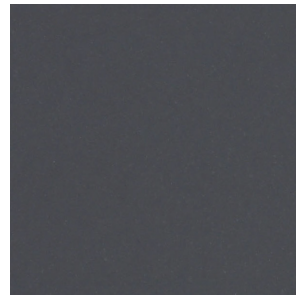




BLUE\*



GREY



CHARCOAL



CHESTNUT



DARK GREY



GREEN\*



RED

**Poly-Crete MD, MDB, SLB, HF systems and Poly-Crete TF Plus topcoat feature a matte finish. Poly-Crete Color-Fast topcoat features a semi-gloss finish and UV stability for color retention.**

\*Poly-Crete Color Fast in these colors require a grout coat of Poly-Crete TF Plus to ensure consistent color.

**NOTE:** Differences in chemical composition, thickness, application methods and jobsite conditions may cause slight variations of individual colors across various products. Colors may also be affected by age, heat and exposure to ultraviolet light from natural sunlight and overhead lighting (no-UV stable products). Dur-A-Flex recommends obtaining an actual color sample for best representation.